

CERTIFICATE OF LOCATION OF GOVERNMENT CORNER

WEST QUARTER _____ Corner of Section 12 , Township 107N , Range 40W

5th Principal Meridian, State of Minnesota, County of MURRAY

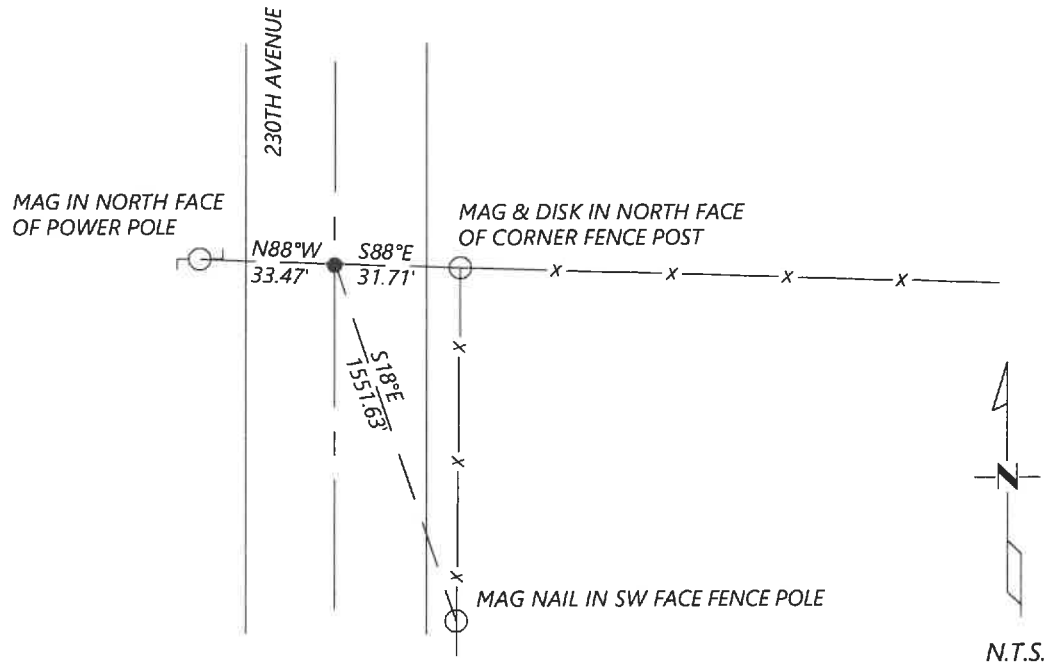
At the corner location shown on the sketch:

On 8/26/2020 found a REBAR WITH 1" ALUMINUM "DNR" MARKED CAP 0.3' BELOW GRADE
DATE

left monument as found lowered monument removed monument (explain)

On _____ placed a _____
DATE

SKETCH OF REFERENCE TIES



Statement of evidence for this corner location is on back of this page.

I hereby certify that this document was researched and prepared by me or under my direct supervision and that I am a licensed Land Surveyor under the laws of the State of Minnesota.

Signature [Handwritten Signature]

Date 6/16/2021 License No. 45874

Title:

- Land Surveyor Professional Engineer
- County Surveyor County Engineer

OFFICE OF THE COUNTY RECORDER

County of Murray

I hereby certify that this document was filed in the Co.

Recorder's office at _____ M. on the _____ day of _____ A.D. 20 _____

County Recorder [Handwritten Signature]
by JUN 22 2021, Deputy

DOCUMENT NO. _____

Statement of Evidence:

West Quarter Corner of Section 12, Township 107 North, Range 40 West, 5th Principal Meridian, Murray County, Minnesota.

The DNR Bureau of Engineering contacted the following for survey information:

*Minnesota Secretary of State's Office
Murray County Recorder's Office
Murray County Highway Engineer's Office*

July 1861 U.S. General Land Office notes obtained from a Secretary of State's Office show the corner marked with pits and mound.

*October 1991 DNR Bureau of Engineering hired a backhoe to dig for evidence of a monument at corner. Found a 6" by 8" by 8" granite stone down 1.5' over an 8" by 8" by 15" cut granite stone down 2' with a $\frac{5}{8}$ " by $1\frac{3}{4}$ " by 24" iron bar on its east side. The stones were found to be:
on centerline of a north-south road
in line with fences east and west
2646.71 ft from the Northeast corner of Section 14
2643.27 ft from a spike found in the area of the northeast corner of Section 11*

Removed the 6" by 8" granite stone and deposited it next to the 8" by 8" by 15" cut granite stone.

Analysis of the above information led the DNR Bureau of Engineering to conclude that the found stones mark the location of the corner.

September 2020 Westwood Professional Services searched and found DNR iron with aluminum cap and 1 tie as per 1991 Corner Certificate. Accepted found monument and set two additional reference ties.

Analysis of the recovered data, field evidence and survey measurements, indicates that the monument found is the correct perpetuation of this corner. For additional information concerning this corner please contact Westwood Professional Services.